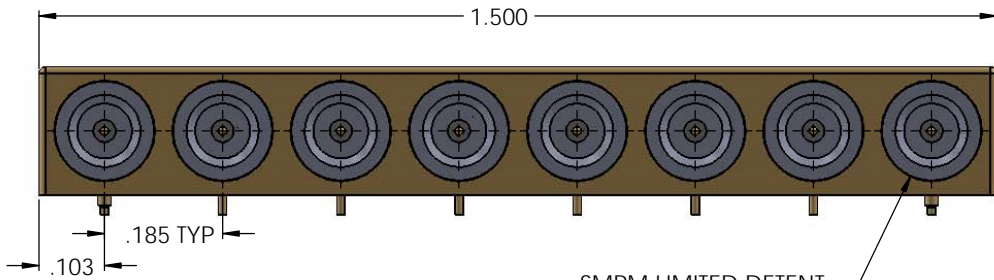
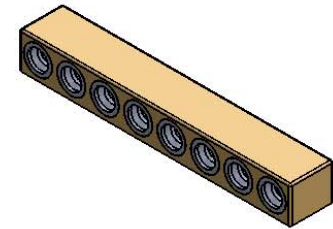
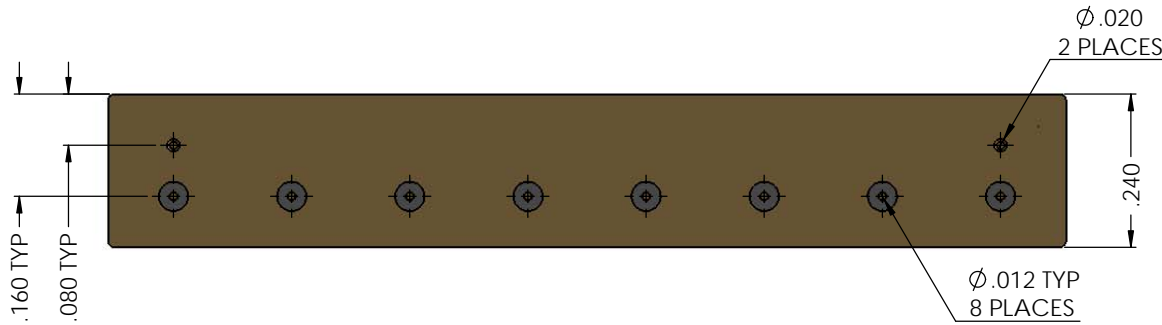
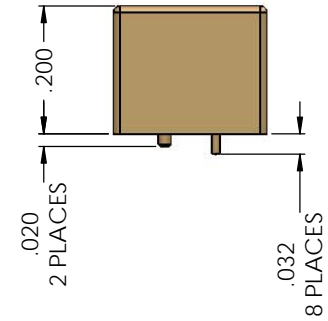


8869000G91P-003



SMPM LIMITED DETENT



NOTES:

- ASSEMBLED CONNECTOR INTERFACE IS DESIGNED IN ACCORDANCE WITH MIL-STD-348 AND DELTA SMPM(LIMITED DETENT) DETAIL.

INSULATOR	TEFLON PER ASTM D1710, TYPE 1, GRADE 1, CLASS A.	N/A
CONTACT	BERYLLIUM COPPER PER ASTM B196, C17300, TEMPER TD04	GOLD PLATE PER ASTM B488
BUSHING	CORROSION RESISTANT STEEL PER ASTM 582, S30300, COND. A	PASSIVATE PER SAE-AMS-2700
INSULATOR	TEFLON PER ASTM D1710, TYPE 1, GRADE 1, CLASS A.	N/A
BODY	BRASS PER ASTM B16, C36000 ALLOY, TEMPER H02	GOLD PLATE PER ASTM B488
DESCRIPTION	MATERIAL	FINISH

Table 1

PROPRIETARY AND CONFIDENTIAL
 THE INFORMATION CONTAINED IN THIS DRAWING IS THE SOLE PROPERTY OF DELTA ELECTRONICS MFG CORP. ANY REPRODUCTION IN PART OR AS A WHOLE WITHOUT THE WRITTEN PERMISSION OF DELTA ELECTRONICS MFG CORP. IS PROHIBITED.
 FILE NAME: 8869000G91P-0031

UNLESS OTHERWISE SPECIFIED:		NAME	DATE	DELTA ELECTRONICS MFG CORP. BEVERLY, MA 01915	
DIMENSIONS ARE IN INCHES		DRAWN	ADK	9/26/2014	www.deltar.com / Ph: 978-927-1060 / Fax: 978-922-6430
TOLERANCES:		CHECKED	ADK	9/26/2014	
FRACTIONAL ± 1/64		ENG APPR.	BJM	9/26/2014	
ANGULAR: MACH ± 1° BEND ± 1°		COMMENTS:			TITLE:
TWO PLACE DECIMAL ± .01					SMPM RIGHT ANGLE PCB MOUNT RECEPTACLE MALE - LIMITED DETENT POST CONTACT GANGMATE
THREE PLACE DECIMAL ± .005					SIZE DWG. NO. REV
SURFACE FINISH = 63					B 8869000G91P-003 -
MAX. CORNER BREAKS = .004					CODE ID - 00795 WEIGHT: 8.94 g SHEET 1 OF 1
THIRD ANGLE PROJECTION					
MATERIAL	SEE TABLE				
FINISH	SEE TABLE				
SCALE:					